

# **ISU ALUMNI ASSOCIATION BOARD OF DIRECTORS MANUAL**

## **TABLE OF CONTENTS**

### **WHO WE ARE**

The ISU Alumni Association and its Board of Directors	2
Guidelines for Honorary Membership	8
Alumni Engagement Office and Staff	9
ISU Alumni Association Board and Staff Roles	12
Volunteer Position Descriptions	14
Committee Descriptions	25

### **OUR MISSION and UNIVERSITY ORGANIZATION**

Mission/Vision Statements	39
Illinois State University Board of Trustees	40
University and University Advancement Organization	41
University Songs	43

### **REFERENCE SECTION**

Committee Meeting Agenda Form	45
Committee Meeting Notes Form	46
Committee Report Form	47
Historical Timeline for Illinois State University	48
Glossary	64

## Welcome

Welcome to the Alumni Association Board of Directors! The Association and the University appreciate the time and talents you will contribute as a volunteer leader. The following information is provided to achieve a mutually beneficial working relationship between the board, Alumni Engagement staff, and the University community.

### **The Alumni Association**

The Illinois State University Alumni Association works in collaboration with the Office of Alumni Engagement to serve alumni, the University and its students. As ambassadors, advocates and advisors, the members of the Association serve to strengthen the University's traditions, its future growth, and its networks of influence. The Alumni Association does not have its own 501(c)3 nonprofit status, but instead is part of a collaborative relationship with the University.

### **Our Constituency**

As of May 2023, we have over 235,000 living graduates throughout the world. Our graduates are concentrated in the states of Illinois, California, Florida, Texas, Wisconsin, Indiana, Missouri, Arizona, Colorado, and Georgia. Most of our graduates are located throughout the state of Illinois. The top eight areas in Illinois include Chicago, Bloomington/Normal, Peoria, Springfield, Rockford, St. Louis/Metro East, Decatur, and Galesburg.

### **Board of Directors**

The Alumni Association governance is comprised of not more than twenty-five (25) members which includes positions for twenty (20) at-large board members and five (5) officers (president, president-elect, secretary, treasurer, and immediate past president). As University volunteers and distinguished alumni, these individuals should represent a diverse blend of professions, ages, ethnicities, academic areas of study, and geographic locations. Board members are elected during the annual meeting held during the fourth quarter of the fiscal year. A term is three years, with board members having the option to be elected for one additional three-year term. The full board meets four times a year.

The Executive Committee includes officers (president, vice president/president-elect, treasurer, and secretary), at-large members, and the immediate past president of the Board of Directors. The Executive Committee has the power to act for the board in the intervening time between meetings. Officers are also elected at the annual meeting and serve for one-year terms. All officers and board members serve without financial remuneration.

These standing committees assist the Office of Alumni Engagement to accomplish much of the work of the Alumni Board:

- Awards
- Board Development
- Diversity, Equity, and Inclusion
- Golden Redbirds
- Homecoming
- Presidents Roundtable
- Redbird Engagement & Development

- Scholarship

Each standing committee is chaired by a member of the Board of Directors with additional members and other volunteers completing the committee rosters. Nonboard members are unable to sit on the board development committee. The association president appoints the committee chairs and serves as an ex officio member of each committee. Ad hoc committees are formed as needed. To facilitate and foster relationships with other campus groups, Alumni Association representatives serve as liaisons on the following: Athletics Council, the Illinois State University Foundation Board of Directors, Bone Scholar Selection Committee, and Honorary Degree Selection Committee. The president appoints these representatives. As stated in university committee descriptions, the immediate past president is appointed to the Foundation Board and the president serves on the Honorary Degree Selection Committee.

Each year the Illinois State University Board of Trustees appoints a member to serve as a liaison to the Alumni Association Board of Directors. This non-voting director provides a strong link between the Board of Trustees and the University's alumni.

The Association bylaws provide provisions for honorary and emeritus members of the Board of Directors. These individuals shall receive information and mailings and may attend Board of Directors meetings and special events; however, they are not entitled to vote nor are they eligible to serve as officers or chairs of standing committees.

The board advises and works in concert with the Alumni Engagement staff to support, promote, represent, and champion the cause of graduates of the University. The Alumni Board aspires to be viewed by the University administration, campus community and alumni constituents as the advocates of choice for the University.

### **Director Commitments**

In general, board members will be expected to participate within the policies and procedures of both the University and the Alumni Association by:

- Respecting the confidentiality of information and mailing lists
- Not using the name, endorsement or service of the Alumni Association and the University for the benefit of any person or organization
- Not using the affiliation with or equipment and other resources of the Alumni Association and the University to advance personal, political, or profit motivated activities

Specific commitments each individual director is asked to make include:

#### **Committee/Liaison Commitment**

- Each director will **serve on a minimum of one standing Alumni Board committee or in an Alumni Board liaison position each year**

As an alumni leader, each director is encouraged to serve as chair of an existing standing Alumni Board committee

## **Board Meeting Participation Commitment**

- In-person attendance is appreciated at each regularly scheduled meeting of the Alumni Board
- In preparation of each meeting, directors should review information sent to them prior to the meeting
- Active participation is expected at Alumni Board meetings to ensure that the decisions and direction of the Alumni Board reflect the consensus of the directors

## **Financial Commitment**

- As required in the Alumni Association bylaws, board members **must be active members of the Association**. An alumnus who has made a gift to the Illinois State Foundation during the current or preceding fiscal year is considered active. The Executive Director will monitor compliance while the Executive Committee will work to communicate commitment is followed.
- The University's goal is 100 percent participation of board members in the Annual Fund. Each board member is expected to make an annual commitment to the Alumni Association Scholarship and is encouraged to make a contribution to an academic department/school or program as each director deems appropriate.
- Board members must assume any expenses associated with attending meetings and functions/events. Board members are responsible for maintaining personal records needed for income tax purposes. The board president will have hotel costs covered by the Association for commencement activities.

## **Advocacy Commitment**

- With the increased focus on the advocacy role of the Alumni Board, board members are encouraged to actively participate in a wide variety of events throughout the year. Many factors will impact the availability of each director to attend the myriad of events available both on and off campus. Board members are encouraged to attend one event per quarter throughout the year. The Alumni Engagement staff can assist with identifying specific events that match each director's interests and availability.

Several categories of advocacy opportunities available to board members include:

### **Alumni Events**

Participation is highly recommended at events sponsored by the Office of Alumni Engagement, including but not limited to the following:

- Alumni Association Awards
- Half Century Club Reunion
- Alumni Network Gatherings
- Homecoming Alumni Day

## **University Events**

Participation is strongly encouraged at events that encompass the entire University, including but not limited to the following:

- Homecoming (e.g., parade, Redbird Welcome tent)
- Founding Celebration (e.g., bell ringing)
- Commencement (e.g., commencement day volunteer)

## **Campus Community Events**

Participation is encouraged at the many opportunities that exist to connect with various constituents throughout the campus community, including but not limited to the following:

- Illinois State University Board of Trustees meetings
- Athletics and Fine Arts events
- Division of Student Affairs events
- University Speaker Series
- Academic Colleges and Departments/Schools events and activities

## **Students**

Connection with future alums while they are current students is a tremendous opportunity to establish the 'alma mater' mentality while they are still on campus, including but not limited to the following groups/events:

- Admission programs
- Student Alumni Council activities
- Academic Recognition events
- Speaker for classroom/for department theme week (COM Week, Business Week, etc.)

## **Board Commitments**

As a group, the Alumni Board is expected to:

- Work in partnership with the University as an advisor to and as an advocate for the institution
- Understand and respect the roles of the executive director of Alumni Engagement and Alumni Engagement team, University Advancement, the Office of the University President, the Board of Trustees, and the broader University community in relationship to the Alumni Association Board of Directors
- Work in partnership as a leadership team
- Define and uphold the Alumni Association's mission
- Establish policies for the Alumni Association that are effective, legal, ethical, and accountable
- Establish and implement strategic plans for the Alumni Association
- Support and engage in alumni programs and services
- Provide orientation to board members and opportunities for leadership
- Assess the performance of all Alumni Association policies, programs, and services
- Advise regarding the performance of the board, its collaboration with Alumni Engagement staff and the University community

- Work in partnership with the Foundation to increase private support to the University
- Honor the legacy and traditions of the University and the Alumni Association

## **Board Goals**

The Alumni Association Board has set the following goal:

- Enhance alumni and student connections to the University while fostering lifetime and active engagement with the Alumni Association

To accomplish this goal, the association develops annual plans of action and assesses the resulting impact.

### Alumni Networks

Alumni networks provide an important outreach function for the Association and provide a vital networking link among their volunteers and to the University. Networks are organized online, geographically, and/or developed around a common affinity such as a diverse community, student association or profession.

### Student Alumni Council

“Students helping students for today and tomorrow” is the theme and commitment demonstrated by the members of the Student Alumni Council (SAC). Membership in SAC is open to all students at Illinois State. SAC works together with the Alumni Engagement staff and the Alumni Board to help cultivate students into active alumni. One recent SAC graduate is appointed to a one-year term on the Alumni Board every summer (see provisions and qualifications in the bylaws). SAC sponsors many programs and services for students, including leadership experiences and scholarships. The current SAC president frequently attends the Board of Directors meetings.

### Alumni Membership

All persons who have graduated from Illinois State University hold membership in the Illinois State University Alumni Association. Individuals who have attended the University may be granted membership upon their request. Active members are those who have made a gift to the Illinois State University Foundation during the current or preceding fiscal year. All active alumni have the right to vote at the Association’s annual meeting and are eligible to serve on the Board of Directors. With an alumni population over 235,000, the Alumni Board can be a strong voice on behalf of the University's needs.

Active and involved alumni are the lifeline of a university. Their role could take a variety of forms such as:

- Demonstrating pride in Illinois State University
- Identifying quality prospective students and assisting with their recruitment to Illinois State
- Being informed about the strengths and needs of the University through the university’s award-winning magazine *Illinois State*

- Serving to exchange information between their respective communities or networks and the University
- Supporting the University's programs and events with attendance and bringing non-alums to share the experiences
- Working with the Foundation staff to facilitate fundraising opportunities for the University
- Providing the University with a source of expertise
- Bringing expressed concerns of others about Illinois State to Alumni Engagement staff so they could facilitate a response through appropriate channels

### **Benefits of Membership**

All members of the Alumni Association receive the following benefits of membership:

- The *Illinois State* magazine sent periodically throughout the year
- Invitations to numerous programs and events held both on campus and off
- Opportunity for membership in alumni networks
- Ability to join the alumni online book club
- Access to virtual events centered around education, professional development, and entertainment
- Accessibility to (including some discounts) various campus resources such as the University Golf Course, Student Fitness Center, Milner Library, Tech Zone, fine arts performances, and athletic contests
- Availability of specialized group insurance offerings
- Online resources such as event registration

**Alumni Association Board of Directors  
Executive Committee  
Guidelines for Nomination of Honorary Member**

These guidelines are suggested for use by the Illinois State University Alumni Association Board of Directors Executive Committee when deciding to nominate a non-alumnus as an honorary member of the Alumni Association. When nominating a person for this honor, it is suggested that the person:

- Has provided significant contribution of time and support to the University and/or the Alumni Association
- Is recognized as a positive leader and citizen in his/her community, profession and/or life in general
- Has shown dedication to furthering the causes of the University and/or Association and continued commitment for the future

Nominations must be in writing and detail the reasons why this person should be considered for the honor. Nominations may be sent to the president of the Alumni Association Board of Directors in care of Alumni Engagement. Additional characteristics and information may be used at the discretion of the Executive Committee for a nomination. Nominations must be approved by the Alumni Association Board of Directors in order to allow the Board of Directors to vote to approve/decline the nomination.

After nominations have been approved, a certificate will be presented to the person on behalf of the Alumni Association at an appropriate time.

*Adopted June 2004/ Revised August 2009*



## **Alumni Engagement Staff and Office**

The full-time administrative staff of Alumni Engagement is currently comprised of an executive director of alumni engagement, two senior directors, two directors, one associate director, an assistant director, a marketing coordinator, a program assistant, two full-time staff, two graduate assistants, and interns who work together with the Association's board of directors to strengthen alumni engagement and the University's mission. The unit reports to the vice president of University Advancement and is a budgeted department of the University. As such, the Alumni Association board is not responsible for hiring or supervising Alumni Engagement personnel. However, board members have served on Alumni Engagement staff search committees and where appropriate, search committees for other university positions. The Alumni Association Board does not have an official fiscal responsibility for assets or operating budgets. The board does have influence over the board budget specifically.

Chairpersons of the standing committees work in cooperation with their Alumni Engagement staff liaisons to plan for specific events and/or activities. At each association board meeting, a report that summarizes expenses encumbered for the programs/services budgeted against the royalties or earned income account is shared.

The Alumni Engagement office currently has four sources of funding for annual operating expenses:

- State general revenue funds provided by the University
- Allocations from the Illinois State University Foundation Board of Directors made available through private support
- Royalties, interest income or earned income from insurance programs, merchandise or other services offered to alumni
- Event fees

Advancement Operations maintains alumni data and is responsible for and committed to the ethical collection and use of information in the pursuit of legitimate university goals.

## **Alumni Engagement and University Commitment**

To assist the Alumni Association Board of Directors in fulfilling its mission, the members of the Alumni Engagement staff and the University community will:

- Work in partnership with the Alumni Association Board respecting their ideas and time as university volunteers and utilizing their talents where needed
- Provide professional staff support and resource materials to assist volunteer leaders
- Inform board members of important issues and needs of the University
- Facilitate opportunities for Alumni Association representation on appropriate university committees and boards
- Invite board members to appropriate University educational, governmental, cultural, or athletic events
- Maintain historical records
- Arrange access to campus facilities for Alumni Association meetings and events
- Attend meetings and events as appropriate

## **Alumni Engagement Office Information**

Illinois State University  
Alumni Engagement  
Alumni Center  
1101 N. Main  
Campus Box 3100  
Normal, IL 61790-3100  
Phone: (309) 438-2586  
Fax: (309) 438-8057  
E-mail: [alumni@IllinoisState.edu](mailto:alumni@IllinoisState.edu)  
Website: [Alumni.IllinoisState.edu](http://Alumni.IllinoisState.edu)

## **Current Alumni Engagement Staff**

Kris Harding, M.S. '94  
Executive Director, Alumni Engagement  
[klhardi@ilstu.edu](mailto:klhardi@ilstu.edu)

Jamie Sennett '99  
Sr. Director  
[jrsenne@ilstu.edu](mailto:jrsenne@ilstu.edu)

Stephanie Duquette '04, M.S. '15  
Sr. Director  
[saduque@ilstu.edu](mailto:saduque@ilstu.edu)

Rachel Kobus '09, M.S. '11  
Director  
[rkobus@ilstu.edu](mailto:rkobus@ilstu.edu)

Gabriella Trevino '18  
Director  
[gtrevin@ilstu.edu](mailto:gtrevin@ilstu.edu)  
Samantha Lowry  
Associate Director  
[smlowry@ilstu.edu](mailto:smlowry@ilstu.edu)

Juliana Nelson '14  
Assistant Director  
[jedunca@ilstu.edu](mailto:jedunca@ilstu.edu)

Emily Deppermann '20. M.S. '23  
Marketing Coordinator  
[eadeppe@ilstu.edu](mailto:eadeppe@ilstu.edu)

Jill Hills  
Office Manager  
Jhills1@ilstu.edu

AshLynn Cowles  
Customer Representative  
acowles@ilstu.edu

## ISU AA Board and Staff Roles

### Purpose

This document defines the roles of ISU Alumni Engagement (AE) Staff and ISUAA Board of Directors on specific initiatives. It is intended to facilitate a better, more cohesive working relationship, in order to achieve the ISU Alumni Association vision.

### Definitions of Terminology

**Approve:** Simple acceptance or endorsement

**Awareness:** Knowledge of the activity, no ownership

**Colead:** Shared ownership responsibility

**Consult:** Upon request, provide advice or opinion

**Contribute:** To play a role in the activity and/or bring about the end result

**Lead:** Ownership to organize and direct

**No Role:** No involvement

ACTIVITY	BOARD	STAFF	EXECUTIVE DIRECTOR
<b>AE PLANNING</b>			
Goals	Awareness	Lead and Approve; Advise on Progress	Consult
Priorities	Contribute	Contribute	Lead
Strategies (messages, KPIs, etc.)	Awareness	Lead and Approve; Advise on Progress	
Tactics (channels to deliver messages)	No Role	Lead	
Develop Action Plans and Measurables	No Role	Lead	
Department Goals	No Role	Colead	Colead
Staff Member's Individual Goals	No Role	Colead	Colead
<b>AE PROGRAMMING</b>			
Maintain Program Records; Prepare Program Reports	No Role	Lead	
Prepare Department Budget	No Role	Contribute	Lead
Prepare and Approve ISUAA Agency Budget	Contribute/Approve	Lead	
Expense Management of the ISUAA Agency	No Role	Awareness	Lead
Financial Reporting of Department Budget	No Role		Lead

<b>Financial Reporting of ISUAA Budget</b>	Awareness	Lead	
<b>Audit ISUAA Agency Expenses / Budget</b>	Awareness		Lead
<b>Train Volunteer Leaders</b>	Consult	Lead	
<b>Oversee Evaluation of Products, Services and Programs</b>	Awareness	Lead	
<b>AE PERSONNEL</b>			
<b>Hiring and Management of Staff</b>	No Role	Contribute	Lead
<b>Decision and Changes to Staff</b>	No Role	Contribute	Lead
<b>Staff Resourcing</b>	Awareness	Colead	Colead
<b>AA COMMUNITY RELATIONS</b>			
<b>Describe Organization to Community</b>	Lead	Contribute	
<b>Official Communications</b>	Awareness	Lead	
<b>Provide Organization linkage with Other Organizations</b>	Colead	Colead	
<b>Channel voice of Alumni to the ISUAA</b>	Colead	Colead	
<b>Channel voice of Alumni to the University</b>	Colead	Colead	
<b>Channel voice of University to Alumni (not exclusive)</b>	Colead	Colead	
<b>BOARD MEETING AND AA COMMITTEES</b>			
<b>Appoint Committee Members</b>	Lead	Awareness	Contribute
<b>Committee Chair Accountability</b>	Colead	Colead	
<b>Committee Member Accountability</b>	Colead	Colead	
<b>Promote Attendance at Board/Committee Meetings</b>	Colead	Colead	
<b>Recruit New Board Members</b>	Lead	Contribute	Contribute
<b>Onboard New Board Members</b>	Contribute	Lead	
<b>Plan Agenda for Board Member Quarterly Meetings</b>	Colead	Awareness	Colead
<b>Plan Agenda for Board Committee Meetings</b>	Lead	Contribute	
<b>Take Minutes for Board Meetings</b>	Lead/Approve	No Role	Awareness
<b>Plan and Propose Committee Organization</b>	Colead	Colead	
<b>Prepare Board Meeting Materials</b>	Contribute	Awareness	Lead
<b>Sign Legal Documents</b>	No Role	Contribute	Lead
<b>Ensure Implementation of Board and Committee Decisions</b>	Contribute	Lead	
<b>Manage Committee Disputes</b>	Awareness	Consult	Lead

## **Illinois State University Alumni Association Volunteer Job Description**

Position:       **President**

### General Responsibilities:

- Serve as the leader for oversight of the volunteer operations of the Alumni Association Board of Directors
- Partner with the Alumni Engagement office staff and the Illinois State University campus community to meet the needs of alumni of Illinois State University.

### Specific Duties:

- Manage the proceedings of the Alumni Association Board of Directors' meetings, including the development of the agenda and conducting the meetings
- Develop the agenda for and chair the meetings of the Board Executive Committee
- Serve as the representative of the Alumni Association Board of Directors on various campus committees (e.g., Honorary Degree Committee) and at various University functions (e.g., Founding Celebration, Commencement)
- Liaise with the executive director of Alumni Engagement with regard to the finances of the Alumni Association
- Appoint committee chairs and committee members for the various committees of the Alumni Association
- Serve as ex-officio member of all committees
- Serve as liaison to the University president, the University Board of Trustees, and the Alumni Engagement office on behalf of the association
- Provide oversight to ensure the actions of the Association Board of Directors are in adherence to the association's bylaws
- Provide oversight to ensure that the various individuals serving as members of the Board of Directors meet the eligibility and tenure requirements of the bylaws
- Encourage individuals serving on the Board of Directors to be passionate in their advocacy role for the association, the alumni and the University
- Attend campus-sponsored events as a representative of the association and the alumni
- Attend alumni-targeted events as a representative of the Association Board in order to maintain personal contact with alumni

### Training Needed/Expectations of Staff:

- Work with executive director to create meeting agendas
- Familiarity with operating procedures and structure of the Alumni Association Board of Directors
- Provide input and assistance to Alumni Engagement staff in communicating to the Association Board of Directors and the Executive Committees, including agendas, reports and minutes
- Familiarity with operations of University units, including the Alumni Engagement office and the campus community at large

- Assist with scheduling appearances and responsibilities at campus-sponsored and alumni-targeted events

Benefits to Association:

- Focal point and spokesperson for activities of the Alumni Association Board of Directors
- Lead Advocate for Illinois State University alumni

Term of Office: One year

## **Illinois State University Alumni Association Volunteer Job Description**

**Position: Vice President/President Elect**

**General Responsibilities:**

- Serves in the absence or at the request of the president in the performance of the president's assigned duties
- Performs other duties as assigned by the president and the Board of Directors

**Specific Duties:**

- Member of the Executive Committee.

**Training Needed/Expectations of Staff:**

- General understanding of functions of the Alumni Association Board of Directors, Alumni Engagement staff structure and function and the University at large
- Experience in conducting meetings, developing agendas and managing committees within the Association

**Benefits to the Association:**

- Available spokesperson/leader in Alumni and University functions in the absence of the association president or in addition to the president when needed
- Support for association president and alumni staff

**Term of Office: One year**



## **Illinois State University Alumni Association Volunteer Job Description**

**Position: Immediate Past President**

### General Responsibilities:

- Counselor and advisor to the Alumni Association Board of Directors and staff
- Liaison to the University Foundation Board of Directors on behalf of the Alumni Association Board of Directors
- Chair of the Presidents Roundtable
- Chair of Board Development Committee

### Specific Duties:

- Provide counsel on association matters as needed and requested
- Attend meetings of the Foundation Board and prepare and provide written reports to the Alumni Association Board
- Chair Board Development Committee and lead in reviewing candidates for the various offices within the association, including their updated profiles, and generating the appropriate reports for presentation
- Work cooperatively with assigned staff in planning events and meetings of Presidents Roundtable
- Conduct/preside Presidents Roundtable meetings

### Training Needed/Expectations of Staff:

- Work cooperatively with assigned staff in carrying out Board Development Committee responsibilities
- Providing overall counsel to board and staff on other matters

### Benefits to Association:

- Utilizing experienced leadership in developing and directing activities of the association;
- Retaining and utilizing historical perspective of association leadership.

Term of Office: One year

## **Illinois State University Alumni Association Volunteer Job Description**

Position:       **Secretary**

General Responsibilities:

- Create and maintain accurate records of Alumni Association Board of Directors meetings and Executive Committee meetings

Specific Duties:

- Record and review recorded transcripts of official meetings of the Board of Directors and Executive Committee and any other special meetings where meeting minutes would be required
- Receive any communications and other documents as requested to be added to the official records of the association
- Work cooperatively with Alumni Engagement staff in preparation of minutes of the Association
- Review minutes at committee meetings, board meetings, and special meetings as required or requested

Training Needed/Expectations of Staff:

- Excellent writing and listening skills
- Cooperative working relationship with staff to prepare and distribute meeting minutes and related attachments to the Board of Directors and other persons as needed or requested

Benefits to Association:

- Appropriate and accurate records of Association actions are recorded and maintained
- Proper and timely records of association actions are communicated

Term of Office: One year

## **Illinois State University Alumni Association Volunteer Job Description**

Position: **Treasurer**

### General Responsibilities:

- The treasurer shall collaborate with the Executive Director of Alumni Engagement to provide input, guidance, and feedback into the Alumni Association Board of Directors annual budget.

### Specific Duties:

- Work to gain a thorough understanding of the structure and allocations of the association budget to provide working knowledge to the Board on a regular basis.

### Training Needed/Expectations of Staff:

- Cooperative working relationship with Executive Director to review board of directors' budget.
- Training on the structure and operating model of the Alumni Association Board of Directors annual budget

### Benefits to Association:

- Increased understanding and working knowledge of the Alumni Association Board of Directors annual budget
- Formalized role providing input to the Office of Alumni Engagement on the allocation and direction of the board's annual budget

Term of Office: One year

## **Illinois State University Alumni Association Volunteer Job Description**

Position:       **At-Large Executive Committee Member**

### General Responsibilities:

- Maintain familiarity with Association bylaws, Alumni Board policies and committee structure
- Attend and participate in Executive Committee meetings
- Represent the general board membership in discussions of Association business before the Executive Committee
- Be an advocate for the University, association, and board

### Specific Duties:

- Attend Executive Committee meetings and provide support, insight and advice to the Executive Committee
- Carry out any special duties or projects assigned by the president on behalf of the Executive Committee

### Training Needed/Expectations of Staff:

- Familiarity with responsibilities of the Executive Committee and the Association Board and committee structure
- Accept and carry out any special assignments in cooperation with Alumni Engagement staff as needed

### Benefits to the Association:

- Broader representation of the Association Board on the Executive Committee
- Additional board members available for special assignments in carrying out Executive Committee responsibilities
- Broader training of board members in functions of the Alumni Board

Term of Office: One year

## **Illinois State University Alumni Association Volunteer Job Description**

**Position:       Committee Chair**

**Requirements:**

- Overall understanding and leadership of committee responsibilities, tasks, and projects
- Member of Alumni Association Board of Directors

**Specific Duties:**

- Recruit additional committee members as needed from alumni volunteers and friends of the University to fulfill the duties, tasks, and responsibilities of the committee
- Determine meeting dates and times
- Develop meeting agendas
- Conduct committee meetings
- Delegate tasks, including taking of meeting minutes and creating required reports, as necessary within the committee
- Provide appropriate committee reports to the Board of Directors

**Expectations:**

- Candidate should have a general understanding of the specific committee purpose and what the committee does
- Candidate should be able to work cooperatively with the assigned Alumni Engagement staff liaison

**Benefits to the Association:**

- Effective conducting of committee activities and overall effective support of Alumni Board strategic goals

**Term of Office: One year**

## **Illinois State University Alumni Association Volunteer Job Description- Liaisons**

Position:       **Athletic Council Liaison**

General Responsibilities:

- To serve as one of two alumni representatives on the Council which is a standing committee of the Academic Senate. The council serves as an advisory body to the director of athletics and the president.

Specific Duties:

- Serve on one of the five subcommittees of the council
- Participate in conversation as it relates to sports offerings, NCAA regulations, programming direction and concerns of constituent groups
- Give report to Alumni Association Board of Directors on athletic updates as needed

Training Needed/Expectations of Staff:

- Interest in athletic field and/or NCAA policies and regulations
- Ability to meet with council and committee as meetings are scheduled

Benefits to the Association:

- Represent alumni perspective on the council
- Share feedback and concerns from board and alumni population

Term of Office: Three years with ability to serve consecutive terms

Position:       **Bone Scholar Liaison**

General Responsibilities:

- Serve as a member of the Bone Scholars selection committee. Being designated a Bone Scholar is the highest honor an Illinois State University undergraduate student can receive.

Specific Duties:

- Review submitted Bone Scholars applications along with nomination letters and score based on criteria given
- Attend committee meetings as needed
- Attend Bone Scholars luncheon

Training Needed/Expectations of Staff:

- Have understanding of University values

- Able to meet deadlines set for Bone Scholar selection
- Understand criteria of Bone Scholar to feel confident to give feedback on each applicant

Benefits to the Association:

- Represent alumni population when assisting to select in the top honor
- Share alumni perspective when looking at current student achievements and qualifications

Term of Office: One year with ability to serve consecutive terms

Position:       **Foundation Board Liaison**

General Responsibilities:

- Serve as Alumni Association representative to be a voice in conversations as it relates to the Foundation's goals

Specific Duties:

- Attend quarterly Foundation Board meeting
- Share report to Alumni Association Board of Directors following each meeting
- Share updates from the Alumni Association

Training Needed/Expectations of Staff:

- Understanding of the Illinois State University Foundation
- Ability to share updates and feedback as needed to the Foundation

Benefits to the Association:

- Represent alumni population in providing input into the governance and direction of the Foundation

Term of Office: One year by immediate past president

Position:       **Honorary Degree Liaison**

General Responsibilities:

- Serve on the seven-person committee to review and select Illinois State University honorary degree recipients

Specific Duties:

- Help in soliciting nominations for the Honorary Degree
- Review nominations and work with committee to make final selection that will be recommended to the President.

Training Needed/Expectations of Staff:

- Ability to keep all names and information confidential throughout the process
- Have a thorough understanding of criteria to be awarded an honorary degree

- Attend ceremony if able

Benefits to the Association:

- Give alumni perspective as many honorary degree recipients are an alumni of the University
- Provide input into the selection process
- Encourage more alumni nominations to be submitted-

Term of Office: One year by president



## **Illinois State University Alumni Association Awards Committee(s)**

### Purpose

To select, for approval by the University president, recipients of the following awards presented by the Illinois State University Alumni Association:

- Distinguished Alumni Award
- Alumni Achievement Award
- Outstanding Young Alumni Award
- E. Burton Mercier Alumni Service Award
- Senator John W. Maitland, Jr. Commitment to Education Award
- Andrew Purnell Jr. Alumni Trailblazer Award

Current active members of any University board are NOT eligible to receive an Alumni Award. They may be nominated once their service to the board expires.

### Responsibilities

The Committee(s) shall:

- Complete the selections for each of the above named categories no later than August 30 of each year using the established selection criteria
- Make the initial contact to notify recipients of their selection
- Review and update when needed the specific selection criteria for each award category
- Assist the Alumni Engagement staff with the recruitment of possible nominees for these awards as appropriate
- Attend and host the awards ceremony. Each subcommittee chair will introduce his/her respective award and assist the University president in presentation of the awards
- Assist the Alumni Engagement staff with other arrangements/decisions for recognition as needed

### Membership

The chairs of all of the selection committees shall be members of the Alumni Association Board of Directors and are appointed by the president of the board. One selection chair shall also serve as an overall chair. Additional committee members are selected and recruited by the selection chairs according to the guidelines listed below.

- Outstanding Young Alumni Award—Membership shall consist of one additional alumni board member, two to three additional alumni volunteers, and, if possible, one member of the Student Alumni Council.
- Alumni Achievement Award and E. Burton Mercier Alumni Service Award—Membership shall consist of one additional alumni board member, two to three additional alumni volunteers, a representative from the Illinois State Annuitants Association, and if possible, one member of the Student Alumni Council.
- Distinguished Alumni Award—Membership shall consist of one additional alumni board members and two to three additional alumni volunteers.

- John W. Maitland Jr., Commitment to Education Award—Membership shall consist of one additional alumni board members and two or three additional alumni volunteers.
- Andrew Purnell Jr. Alumni Trailblazer Award—Membership shall consist of one additional alumni board members and two or three additional alumni volunteers.

The president of the Alumni Association Board of Directors serves as an ex-officio member of the committee.

#### Timeline

August:	Begin review of potential nominees by subcommittees
Fall:	Complete selections and forward to the University president for approval
January:	Present award recipients to the Alumni Board
Winter:	Work with Alumni Engagement staff to communicate with recipients and prepare for awards program
April:	Host the annual Alumni Association Awards Program

#### Staff Responsibilities

The alumni staff liaison will be responsible for securing a date and making necessary arrangements for facilities; assisting the committee chairs in selecting an appropriate pool of candidates for committee review; submitting selected candidates to the University president for approval; coordinating all arrangements for the annual awards ceremony; and completing necessary follow up. In addition, the staff liaison works throughout the year with the nomination process and candidate files.

*Adopted November 2000/ Revised August 2009/Revised June 2021*

## **Illinois State University Alumni Association Board Development Committee**

### Purpose

- To develop a set of materials that provide orientation and training for members of the Alumni Association Board of Directors, its Executive Committee, and various standing committees
- To recruit and nominate a slate of alumni for membership on the Alumni Association Board of Directors and its executive committee

### Responsibilities

The Board Development Committee shall:

- Develop and maintain, in cooperation with Alumni board, committee chairs and Alumni Engagement staff members, written materials, presentations, and other opportunities for orientation and training for new board members, Executive Committee members, and committee chairs
- Work with Alumni Engagement staff to offer orientation sessions for Alumni board members
- Solicit potential nomination recommendations from the Alumni board and other University sources
- Surface names and maintain a file of potential candidates for the board
- Research and develop a slate of candidates for directors for vote by the Alumni Association Board of Directors at the Association Annual Meeting, taking into account the following considerations:
  - Nominees' interest/ability/willingness to attend Board of Director's meetings
  - Ability/ willingness to serve and participate on at least one standing committee
  - Demonstrate leadership
  - Skills needed on the Board
  - Diversity among Board members based on graduation year, major/college, ethnic background, and geographic location
  - Demonstrated commitment to the University and/or Alumni Association through service and/or financial contributions
  - Active status in the Alumni Association
- Provide as a point of information, a slate of candidates for officers and at-large directors to the Executive Committee prior to the Annual Meeting
- Provide a slate of nominees of officers for vote at the association's last meeting of the year
- Provide a written report on the proposed slate of directors and executive committee, including brief biographies of new members, at the Annual Meeting
- Evaluate service and contributions of current board members for appropriateness of continuing terms

- Contact proposed candidates and discuss their involvement based on considerations listed in the Board Operations Manual prior to the presentation of the slates during the Annual Meeting

### Membership

The chair of the Board Development Committee shall be the immediate past president of the board. Three to five additional board members also shall serve on the committee. The president of the Alumni Association Board of Directors serves as an ex-officio member of the committee.

### Timelines

- January: Chair convenes committee to review service of board members and identify potential members for the board.
- March/April: Directors with retiring terms and any other(s) with questionable service are contacted.  
Proposed candidates and officers are contacted.
- May: A slate of candidates and officers is presented to Executive Committee.
- June: Chair presents slate of candidates for directors and executive committee for election at Annual Meeting; coordinate orientation of new Alumni board members.
- October: Check in with new board members to see if they have any additional questions.
- Periodically: Provide a variety of developmental opportunities for board members.

### Staff Responsibilities

The Alumni Engagement staff liaison will be responsible for guiding the committee in establishment of procedures, orientation, and training of new board members; coordinating dissemination of printed information and organization of formal training presentations; and assisting the committee chair with meeting announcements and other committee arrangements as necessary.

*Adopted November 2000/Revised August 2009/Revised June 2013*

**Illinois State University Alumni Association  
Diversity Equity Inclusion Committee (DEI)**

**Purpose**

The purpose of Illinois State University Alumni Association's Diversity Equity & Inclusion Committee is to consider and act upon how the Alumni Association can partner with Alumni Engagement staff, University administration, faculty, prospective alumni, and students to increase diversity, equity, and inclusion. This committee will align with the University's core values of diversity and inclusion as outlined in Illinois State University's strategic plan, *Educate • Connect • Elevate: Illinois State -The Strategic Plan for Illinois' First Public University 2018-2023*.

**Definition**

**Equity**

Includes a commitment to restorative practices that promote equitable treatment, access, opportunity, and advancement among historically marginalized groups and individuals. Such restorative practices include identifying and eliminating barriers that prevent historically underrepresented and underserved groups from having access to resources, information, and social influence. Equity goes beyond acknowledging diversity, and advocates for justice regarding historically unbalanced conditions.

**Diversity**

Is the presence and acknowledgement of differences that includes a spectrum of intersecting identities such as race, ethnicity, socio-economic status, gender/gender identity and expression, sexual orientation, country of origin, language, ability, veteran status, religious affiliations, and life experiences. Diversity in higher education acknowledges that some populations have been—and remain—underrepresented.

**Inclusion**

Recognizes diversity, advocates for a commitment to equity, and works to create an infrastructure that work to ensure shared power, opportunities, and resources. Inclusive practice involves carving and sustaining pathways to ensure traditionally excluded individuals and/or groups have agency in decision making and are viewed as valuable and necessary for the organization to thrive.

**Responsibilities**

As it relates to diversity, equity and inclusion, the committee shall:

1. Encourage community and respect for differences as it supports the University's goal to provide opportunities for students, staff, and faculty to participate productively in a global society.
  
2. Gather input and insights regarding past and current experiences from a broad range of alumni stakeholders.

3. Work together with members of our diverse campus community and affiliated alumni organizations with a goal toward creating greater understanding, equity, and inclusion across the Illinois State community.
4. Partner with the Alumni Engagement team to ensure DEI is interwoven into its efforts and practices of the Alumni Association Board of Directors.
5. Assist Illinois State University Alumni Association Board committees with applying diversity, equity, and inclusion to committee work. This responsibility may include researching and utilizing appropriate tools to monitor progress.
6. Help students transition into engaged alumni. This responsibility may include inviting students to listening sessions and/or social events tailored to their interest.
7. Be an advocate for Illinois State University. This responsibility may include promoting University and Alumni Association DEI events and news to professional and personal networks.

#### Membership

The chairpersons of the DEI Committee shall be current members of the Alumni Association Board of Directors. Additional members may include other board members, seniors enrolled at the University, and alumni volunteers. The president of the Alumni Association Board of Directors shall be an ex-officio member of the committee.

#### Staff Responsibilities

The alumni staff liaisons will provide support, inform committee members of engagement opportunities on and off campus, assist with board service projects, and communicate with affinity and alumni networks.

*Adopted January 2022*

## **Illinois State University Alumni Association Redbird Engagement & Development (RED) Committee**

### Purpose

To align with the one of the University's core values of **civic engagement** as outlined in the 2018-2023 strategic plan titled *Educate • Connect • Elevate: Illinois State The Strategic Plan for Illinois' First Public University*, the RED Committee will provide leadership and direction for alumni to continue the lifelong responsibility of being informed and engaged global citizens through meaningful opportunities. Additionally, RED will ensure the campus community is aware of the Board of Directors and acknowledge the work of networks and affinity groups.

### Definition

**Civic engagement** is designed to inspire individuals to be productive citizens and impact the larger social fabric by developing a combination of knowledge, skills, values, and motivation. Civic engagement encompasses actions wherein individuals participate in activities of personal and public concern that are both individually life enriching and socially beneficial to the community.

### Responsibilities

As it relates to civic engagement, the Committee shall:

1. Encourage alumni to be civic minded. This responsibility may include educating alumni on what civic engagement is and/or what civic engagement can look like.
2. Create a tradition of Redbird service as an important aspect of alumni culture. This responsibility may include designing a service project for the Alumni Association Board of Directors to participate in and model civic engagement behavior and/or identifying a Redbird service day or month to encourage volunteers to give back to the local community by volunteering at on and off campus activities/events. Service may also be displayed by actively promoting the University and sharing individual ISU stories with prospective students and families, on social media and within personal communities.
3. Support active learning experiences of current Redbird students. This responsibility may include encouraging regional networks and alumni to collaborate with students participating in the alternative breaks program.
4. Be an advocate for Illinois State University. This responsibility may include participating in legislative advocacy events and/or communicating with elected representatives to encourage support for the University.

Additionally, the Committee shall:

1. Raise awareness about the Alumni Association Board of Directors within the University community (i.e. updating member bios and distributing in collaboration with the Board Development Committee, encouraging board member engagement in University activities).

2. Acknowledge network and affinity groups involvement (i.e. spearheading thank you notes and encouragement for activities throughout the year).

### Membership

The chairpersons of the RED Committee shall be a member of the Alumni Association Board of Directors. Additional members may include other board members and alumni volunteers. The president of the Alumni Association Board of Directors shall be an ex-officio member of the committee.

### Staff Responsibilities

The alumni staff liaisons will provide professional staff support, inform committee members of engagement opportunities on and off campus, lend assistance to facilitate board service projects, and assist in communicating with affinity and alumni networks.

*Adopted November 2000 / Revised January 2013 / Revised February 2018*



## **Illinois State University Alumni Association Executive Committee**

### Purpose

To represent and provide leadership to the Alumni Association Board of Directors.

### Responsibilities

The Executive Committee shall:

- Assist the president in setting the agenda prior to each meeting of the Alumni Association Board of Directors
- Monitor progress of committees toward their goals by reviewing committee reports and hearing staff updates at executive committee meetings
- Stay abreast of technology, society, and alumni interests/needs in order to bring new service and program ideas to the board for consideration
- Formulate and recommend to the Board of Directors for approval of general policies regarding the management of the business and affairs of the association
- Appoint ad hoc committees as needed (bylaws review, special programs, etc.)
- Exercise all the powers of the Board of Directors in the management of the business and affairs of the Association except the power to make, alter, or amend the bylaws or powers assigned to the Board of Directors

### Membership

The executive committee consists of the following elected officers of the Board of Directors: president, vice president/president elect, secretary, and treasurer. Other members include the immediate past president and at-large members who are recommended by the Board Development Committee. The executive director of Alumni Engagement and vice president of University Advancement serve as ex-officio members of the committee.

### Timeline

Quarterly: Meet to prepare agenda for board meeting; conduct other business as appropriate

### Staff Responsibilities

The alumni staff liaison will assist all Executive Committee members with carrying out their specific duties and responsibilities by facilitating support services, providing needed information, and serving as a liaison with the University community and staff. In cooperation with the Alumni Association president, the staff liaison will select dates for Executive Committee and board meetings as well as other board functions and events; communicate with Executive Committee members and all members of the Board of Directors; assist the board with its strategic planning; provide all arrangements for both Executive Committee and board meetings; and assist the association president with other details and arrangements as necessary.

*Adopted November 2000 / Revised August 2009*

## **Illinois State University Alumni Association Homecoming Committee**

### Purpose

To support the University's efforts to bring alumni to campus for the annual Homecoming celebration.

### Responsibilities

The Homecoming Committee shall:

- Provide input and ideas for alumni-focused Homecoming activities
- Represent the Alumni Association's interests and concerns on the University's Homecoming Steering Committee
- Assist in the development of and planning for reunions by helping determine reunion groups and contacting alumni to encourage participation
- Actively support Homecoming activities through event participation and encouraging others to attend
- Secure Alumni board parade entry and submit parade application
- Judge the Campus Decorating Contest entries
- Select from nominations for the Alumni King and Queen

### Membership

The Homecoming Committee chair shall be member of the Alumni Association Board of Directors, will be appointed by the president of the Board, and will serve on the University Homecoming Steering Committee. Other members are alumni volunteers and a student representative from Student Alumni Council. The president of the Alumni Association Board of Directors shall serve as an ex-officio member of the committee.

### Timeline

November–May:	Planning phase
Summer:	Select Alumni Royalty
Friday Before Homecoming Week:	Judge Decorating Contest
Homecoming Weekend:	Attend events, manage Redbird Welcome tent setup/teardown
Shortly after Homecoming:	Debriefing process
Year Round:	Chair serves on the University Homecoming Steering Committee

### Staff Responsibilities

The alumni staff liaison will be responsible for working with the Alumni Homecoming Committee as well as the University Homecoming Steering Committee to plan, implement, and evaluate Homecoming activities. Staff members are responsible for all logistical arrangements for all Homecoming events sponsored by the Alumni Engagement office as well as for assisting networks with their events.

*Adopted November 2000 / Revised August 2009*

## **Illinois State University Alumni Association Golden Redbirds Committee**

### Purpose

The Golden Redbirds Committee is committed to creating more opportunities and experiences for our alumni age 60+.

### Responsibilities

The Golden Redbirds Committee shall:

- Meet at least twice each year to offer suggestions and review current programming being offered to our Golden Redbirds.
- Develop an annual marketing outreach plan to the Golden Redbirds alumni with guidance from Alumni Engagement staff.
- Identify, create, and engage Golden Redbirds alumni to unique programming and experiences at Illinois State University.
- Provide information and resources for Golden Redbirds alumni to help them learn, grow, and thrive in later life.
- Assist in planning the annual Half Century recognition event.

### Membership

The chair of the Golden Redbirds Committee shall be a member of the Alumni Association Board of Directors. Additional members may include other board members and alumni volunteers. The president of the Alumni Association Board of Directors shall be an ex-officio member of the committee.

The Half Century Club Subcommittee will be comprised of mostly alumni volunteers who have celebrated their 50th reunion or will be celebrating their 50th reunion. The chair of the Golden Redbirds Committee will be expected to attend Half Century Club Committee meetings.

### Staff Responsibilities

The alumni staff liaison will attend both Golden Redbirds Committee and Half Century Club Subcommittee meetings. They will assist in executing the overall purpose of the Golden Redbirds of alumni 60+ as well as be responsible for all necessary arrangements (invitations, catering, program, room reservations and set-up, participation of the University president and other key administrators/faculty speakers) for the annual Half Century Club event.

*Adopted April 2017/Revised October 2022*

## **Illinois State University Alumni Association Half Century Club Subcommittee**

### Purpose

To provide suggestions and guidance for the development and evaluation of programming which will respond to the needs and interests of alumni who graduated 50 or more years ago in order to continue the relationship between Illinois State Normal University graduates and the University.

### Responsibilities

The Half Century Club Subcommittee shall:

- Meet at least twice each year to offer suggestions and ideas for the annual Half Century Club reunion, including but not limited to session topics, University speakers, tours, receptions, and other programming
- When appropriate, identify ways for Half Century Club members to stay connected with the University
- Assist staff with list reviews for classes with landmark reunions (55th, 60th, 65th, 70th, and 75th) and provide updated information
- Make personal contacts with members of landmark reunion classes in order to encourage attendance at the annual Half Century Club event
- Actively support the annual Half Century Club reunion through attendance and by encouraging other alumni to attend
- Assist staff with implementation of the annual Half Century Club reunion as needed

### Membership

The chair of the Half Century Club Subcommittee shall be the chair of the Golden Redbird Committee, unless otherwise designated. Additional members may include other board members and alumni volunteers. A minimum of 10 alumni should serve on the committee. The president of the Alumni Association Board of Directors shall be an ex-officio member of the committee.

### **Timeline**

January-May:	Meet to coordinate/review plans for spring event
June-August:	Make personal contacts with alumni to encourage event attendance/finalize event plans
October:	Hold annual spring reunion, including special recognition for 55th, 60th, 65th, 70th and 75th anniversary classes
Late October-November:	Meet to evaluate spring program and begin planning for next year's gathering

### Staff Responsibilities

The alumni staff liaison will be responsible for all necessary arrangements (invitations, catering, program, room reservations and set-up, participation of the University president and other key administrators/faculty speakers) for the annual event.

*Adopted November 2000 / Revised August 2009 / Revised April 2017*

## **Illinois State University Alumni Association Scholarship Committee**

### Purpose

To develop criteria and guidelines; seek applications; serve as a mentor/point of contact for all scholarship recipients; and assist in managing scholarship budget for the Alumni Association, Legacy Tuition Waiver and Student Alumni Council/Marian H. Dean and Dillow Legacy Scholarships.

### Responsibilities

The Scholarship Committee shall:

- Develop criteria and guideline procedures for the Alumni Association Scholarship
- Promote scholarship opportunities to incoming and current students and their families
- Collaborate with Alumni Engagement staff and the Alumni Association Board in fundraising for the Alumni Association Scholarship
- Notify student recipients of the scholarship they have been awarded
- Invite student recipients to Alumni Association Board of Directors meetings
- Serve as a point of contact for scholarship recipients
- Work to foster alumni interest in developing and establishing additional scholarships and scholarship opportunities for students
- Work to enhance current scholarships offered through the Alumni Association

### Membership

The chair of the Scholarship Committee shall be a member of the Alumni Association Board of Directors. Additional members may include other board members, alumni volunteers, and friends of the University. A minimum of five committee members is desired. The president of the board shall be an ex-officio member of the committee. Subcommittees may be formed as needed.

### Timeline

Fall: Promote scholarship opportunities  
March: Notify selected recipients  
April: Invite recipients to Alumni Association board meeting

### Staff Responsibilities

The alumni staff liaison will be responsible for providing information on the University's new student recruitment needs and priorities; directing the committee in following established University guidelines; communicating with University personnel; and assisting with communication to applicants.

*Adopted July 2003 / Revised September 2019*

## **Illinois State University Mission/Vision Statements**

### **Alumni Association Mission Statement**

*Adopted 1997*

The mission of the Illinois State University Alumni Association is to support the University through the knowledge, skills, financial resources, and loyalty of its alumni; to communicate and interpret the University's goals and achievements to others; and to promote a spirit of unity and loyalty among former students and friends.

The Alumni Association motto is to serve, advise, advocate, and strengthen.

### **Alumni Engagement Mission Statement**

*Revised July 2005/Revised December 2018*

To unite Redbirds to elevate the success of Illinois State University.

### **University Mission Statement**

*Approved by the Academic Senate on February 6, 2002, and amended on May 7, 2008*

We at Illinois State University work as a diverse community of scholars with a commitment to fostering a small-college atmosphere with large-university opportunities. We promote the highest academic standards in our teaching, scholarship, public service and the connections we build among them. We devote all of our resources and energies to creating the most supportive and productive community possible to serve the citizens of Illinois and beyond.

### **University Vision Statement**

*From Educate Connect Elevate: The Strategic Plan for Illinois' First Public University 2018-2023*

*Endorsed by Board of Trustees, February 2018*

Illinois State University, a first-choice public university, will be increasingly recognized as a national leader for educating high-achieving, motivated students who seek an individualized and transformative experience at an institution that:

- Offers premier undergraduate and graduate programs that integrate traditional knowledge and methods with emerging ideas and innovations
- Generates knowledge through high-quality research, scholarship, and creative activities
- Supports student learning and development inside and outside of the classroom
- Serves the region, state, nation, and world through its commitments to responsible stewardship, meaningful civic engagement, cultural enrichment, and the development of global citizens

**Illinois State University Board of Trustees  
June 2023**

Chairperson, Kathryn Bohn '74, M.S. '80  
Bloomington, Illinois

Scott Jenkins  
Champaign, Illinois

Julie Annette Jones '90  
Chicago, Illinois

Lia Meringa  
Geneva, Illinois

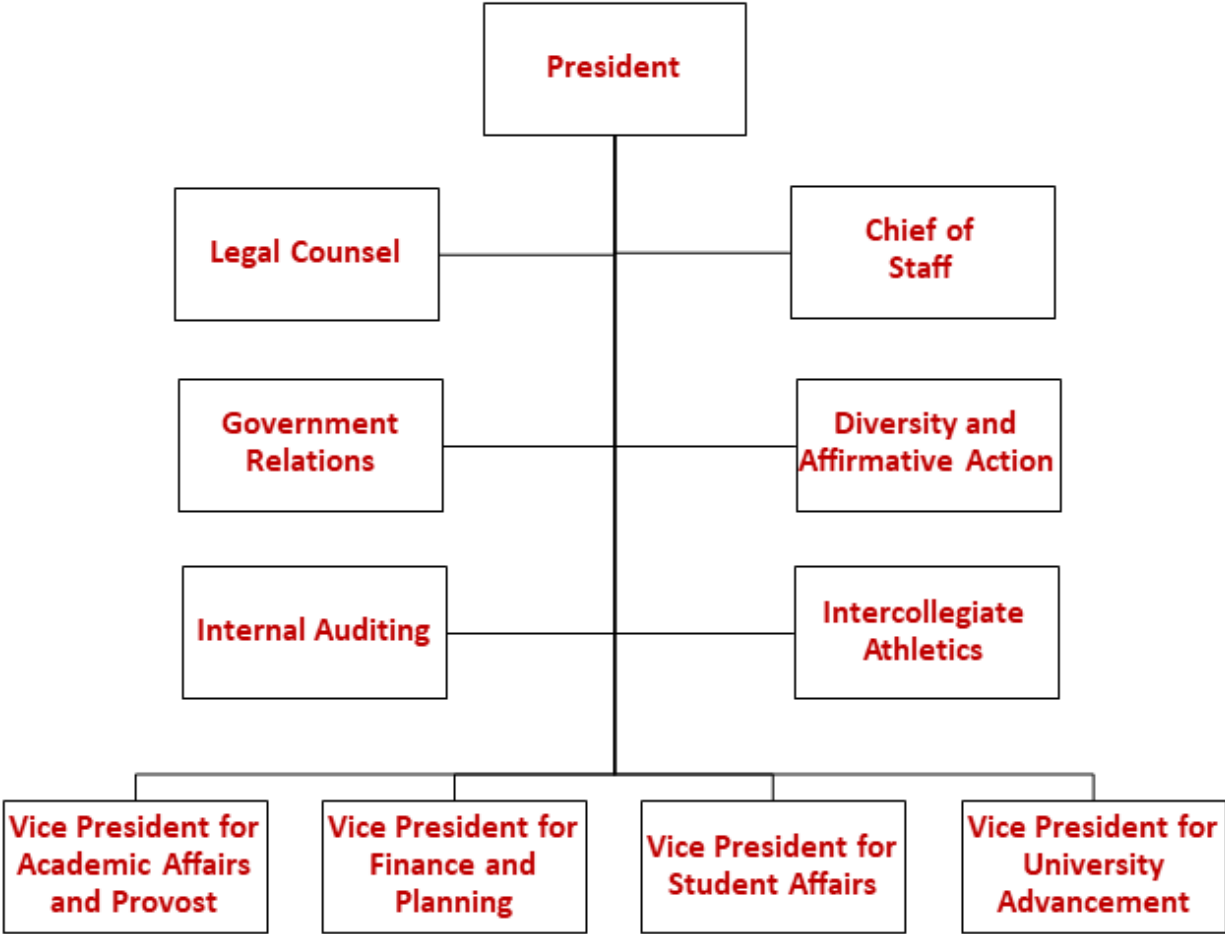
Robert Navarro '91, M.S. '93, Ph.D. '02  
Plainfield, Illinois

Darren Tillis '94  
Chicago, Illinois

Student Trustee:  
Aselimhe "Ash" Ebikhumi  
(Term Expires 2024)



**University Organization**



## University Advancement Organizational Structure

**Pat Vickerman**

Vice President for University Advancement and Executive Director of the Illinois State University Foundation

<https://advancement.illinoisstate.edu/>

**Brian Beam**

Executive Director of University Marketing and Communications

<http://universitymarketing.ilstu.edu>

**Kris Harding**

Executive Director of Alumni Engagement

<http://alumni.illinoisstate.edu/>

**Joy Hutchcraft**

Executive Director of Development/Fundraising Corporate and Foundation Relations

<https://giving.illinoisstate.edu/>

**Jill Wilberg**

Chief Operations Officer

<https://advancement.illinoisstate.edu/leadership/foundation-operations-staff/>

**Mark Wunder**

Assistant Vice President of Development

<https://giving.illinoisstate.edu/opportunities/university/>

**Jillian Nelson**

Sr. Managing Director of Annual Giving

<https://giving.illinoisstate.edu/>

**Illinois State University  
Fight Song**

Go you Redbirds on to battle  
Fight for ISU.  
Raise the banner red and white  
To this emblem we'll be true.  
So let us cheer the Redbirds on to victory  
Every voice proclaim  
We've got the fight,  
We've got the might.  
Let's win this game!

**Illinois State  
University Hymn**

Glory has thou, might and power  
Proud the hall of ISU.  
Deeds that live in song and story  
Loyal sons and daughters true.  
So shall thou in years increasing  
Send thy grads of honest worth  
Forth to bear with zeal unceasing  
Wisdom's torch throughout the earth.

Words by faculty members  
Wanda Neiswanger and Jennie Whitten  
1926

Revised 1998

**Illinois State University  
School Song**

Pride of Illinois  
Join the chorus, sing together  
Gather all as one.  
Let us with bold voice acclaim her  
Hope for all who come.  
Red our color, rich our history  
Friendships always true  
Pride of Illinois forever  
Hail to ISU

Sound and wise when we were founded  
These our noble quest

Wisdom, honor, glory, virtue  
Still we give our best  
Red our color, rich our history  
Friendships always true  
Pride of Illinois forever  
Hail to ISU

Lyrics by David A. and Mary S. McNamee Bower '77  
Music by Jeremy A. Korba 2006

## **Committee Meeting Agenda**

Committee name:

Date of meeting:

Time of meeting:

Place of meeting:

Chairperson:

Note taker (should be volunteer):

Please read:

Please bring:

Agenda topics:

Carryover action items:

New topics

Old business

Adjournment

**Illinois State University  
Committee Meeting Notes**

Date:

Committee name:

Chairperson:

Note taker (should be volunteer):

Key topics discussed:

Action items:

<u>Item</u>	<u>Priority</u>	<u>Responsible Party</u>	<u>Deadline</u>
-------------	-----------------	--------------------------	-----------------

Next planned meeting date:

**Alumni Association Board of Directors  
Committee Report Form**

Committee name:

Committee members:

Committee chair:

Summary of activities:

Action/Pending item(s)

Submitted by \_\_\_\_\_

Date \_\_\_\_\_

## Historic Moments For Illinois State University

1857 Illinois State Normal University (ISNU) became the first state university in Illinois after Governor William Bissell signed a bill on February 18 to create a Normal school. Founder Jesse Fell had led the campaign to locate the University in Bloomington, Illinois; Abraham Lincoln drafted the legal documents to establish this university.

Charles Hovey was named the first principal of the University.

Forty-three students enrolled for the University's first term, which began October 5, 1857. Enoch Gastman, Jr. of Hudson was the first student enrolled. Classes were held at Major's Hall (third floor) on the corner of Front and East Streets in Bloomington, Illinois.

A model school affiliated with ISNU was opened in November, with an enrollment of seven.

1860 Old Main, the University's first official building opened its doors. Located in Normal, Illinois, on the site of the current campus, it served as the campus' major building for nearly 100 years.

The first commencement ceremonies were held for a graduating class of ten with an alumni meeting following the ceremony.

1862 Richard Edwards became the second principal in June.

1863 Alumni Association was founded.

1867 Jesse Fell was appointed to the governing board for Illinois State Normal University.

1868 Jesse Fell developed a landscaping plan which included a campus nursery. He supervised the planting of 1,847 trees. He had planted 13,000 trees on this acreage prior to the University's establishment.

1877 Edwin Hewett was named the third president and brought as a priority the establishment of a university library.

ISNU was the second oldest Normal school west of the Alleghenies. There were 10 such schools in the U.S.

1888 The "Normal Club" in Chicago was established.

The first *Vidette* was published.



- 1890 A general library was established. Ange Milner was hired as the first librarian.  
John Cook became the fourth president.
- 1899 By this time, ISNU was recognized nationally as a leader in the Herbartian movement in teacher education, which centered on an integrated curriculum for elementary grades.  
Enrollment had grown to 900 with 19 faculty.  
Arnold Tompkins became the fifth president for a brief, yet revolutionary tenure in which he beautified the campus, extended the length of class sessions, and expanded the model school to four years of high school.
- 1900 David Felmley became the sixth president and is particularly noted for leading the University from a Normal school into a teacher's college.
- 1905 An alumni club in New York was begun.
- 1907 ISNU's 50th Anniversary was celebrated. By this time, ISNU had established a national presence and was known as the "mother of Western Normals" which resulted from the appointments of a large number of its graduates to presidencies and faculties of other Normal schools.
- 1908 The first bachelor's degrees were conferred on two students in education.
- 1912 The *Alumni Quarterly* was first published.
- 1916 The first Homecoming was celebrated, but did not become an annual event until 1921.
- 1917 North Central Council of State Normal Schools, organized in 1902 by Felmley, expands to become a national association that in 1936, joined with the American Association of Teachers Colleges.
- 1921 Homecoming celebration becomes an annual event.
- 1923 The school's nickname was changed from "Teachers" to "Redbirds" by Athletic Director Clifford "Pop" Horton and Fred Young, *Daily Pantagraph* sports editor.
- 1926 The University's alma mater was written by faculty members Wanda Neiswanger and Jennie Whitten.
- 1929 Gamma Phi Circus was founded by "Pop" Horton, and has become the oldest and largest collegiate circus in the nation.

- 1930 Enrollment increased to 1,500.
- Harry Brown became Illinois State Normal University's seventh president and was instrumental in implementing a new curriculum for teachers of students with special needs.
- 1933 Raymond Fairchild became the eighth president and established a leadership style and policies which involved faculty in the process of governance.
- 1935 The faculty senate and publicity office were established.
- 1942 The University became a training center for World War II naval aviation cadets and the residence halls were converted into naval quarters.
- 1943 The first special education program in the state was established to train teachers of exceptional children.
- 1944 Graduate studies were offered for the first time.
- 1945 The first master's degree was conferred in biological sciences.
- 1950 Enrollment reaches nearly 2,500.
- 1951 A University Council was founded to allow faculty participation in policy making.
- 1955 By the time of his retirement in August, Felmley had established a legacy for improving faculty qualifications and increasing their number, expanding curriculum and off-campus student teaching opportunities, and changing the institution's organization to include semesters, letter grades, and academic departments as basic units.
- 1956 Robert Bone became the ninth president of Illinois State. He led the changes in its mission and its name.
- 1957 ISNU celebrates its 100th Anniversary. The campus has grown to 25 buildings on 68 acres and a 192-acre farm with enrollment reaching toward more than 3,000 students.
- 1959 The process has begun to change the University's mission to a multipurpose institution and its name to Illinois State University.
- 1960 Enrollment reaches to nearly 4,500.
- 1963 Doctoral programs were established.

- 1964 Illinois State University became the official name on January 1.
- 1966 Academic programs and departments were organized into colleges.
- 1967 Samuel Braden became the 10th president and served during three of the most tumultuous years for the institution. He also marked significant positive changes, leading the first 10-year academic plan, increasing the advanced courses for undergraduates by 43percent, as well as acquiring land and building facilities to meet enrollment expectations.
- 1969 Illinois State given the largest budget reduction of the state's 12 colleges and universities as a result of the state's fiscal crisis. At the same time, enrollment has reached a record high of 14,600 students, which created additional funding dilemmas.
- A new constitution and system of shared governance is approved; a student code of ethics as well as security and safety policies were formulated to address disruptive behaviors of the student body.
- 1970 By the end of Braden's tenure, the University would be governed by a new Board of Regents and Will Robinson would be selected to be the first black university-level coach in the nation. Braden would successfully keep the University open during a series of student protests against the Vietnam War and civil rights when other state universities had to close as a result. But he still experienced public objection to the student unrest and he resigned.
- First Distinguished Alumni awards were presented.
- 1971 David Berlo became the 11th president and ushered in a time of adversarial relationships coupled with limited resources, budget cutbacks, and public outcry about the expenditures for the president's home.
- Enrollment reached 18,000.
- Last *Index* was published.
- 1972 Athletic Hall of Fame was established.
- 1973 Gene Budig became the 12th president and was credited with restoring administrative stability, reinstating the University's collegiate system dismantled by Berlo, and successfully adding 21 programs, including five doctoral degrees.
- 1976 Enrollment reached 19,000, which was the limit set for Illinois State by the Illinois Board of Higher Education's master plan.

- 1977 Lloyd Watkins was named the 13th president whose tenure was plagued by state budget deficits, which left Illinois State underfunded compared to other state public universities and resulted in overcrowded classrooms and deteriorating campus physical facilities; and problems with town-gown relations, which resulted from large student parties and subsequent enforcement of local ordinances.
- 1980 First Alumni Achievement and Service awards were presented.
- 1988 Prior to Watkin's resignation in January, Illinois State would be cited as one of two Illinois public universities to be included in the book *How to Get an Ivy League Education at a State University*, enrollment would increase to more than 22,000, academic standards would be strengthened and curriculum expanded to include an international scope.
- Thomas Wallace became the 14th president, a tenure noted for his strong advocacy of improved state funding in general and a new science building in specific, a campus entrepreneurial attitude to increase private funding, and separate governing boards.
- 1989 Illinois State opens an office in Chicago.
- 1990 First Young Alumni Awards were presented.
- 1992 The wording of the University seal is changed to "Gladly we learn and teach."
- 1993 The state approved \$29.2 million for the new science building.
- 1995 Wallace resigned as a result of a faculty no-confidence vote. Despite the dissension on campus, Wallace achieved the implementation of a strategic plan devised by the total campus which provided a guideline for budget and degree-offering decisions; the creation of the Center for Mathematics, Science and Technology Education, and the Katie Insurance School; and significant increases in private giving and grants. He was a vital force in passing legislation to fund the science building and to abolish the Board of Regents.
- 1996 The Board of Regents was eliminated as of January 1. Illinois State obtained its own Board of Trustees.
- David Strand became the 15th president and steadfastly moved to improve morale of the faculty and to restore confidence in the administration of the institution.
- Enrollment reached 19,409 (16,763 undergraduate and 2,646 graduate students) with over 900 faculty.
- The campus is now comprised of 153 buildings (5.5 million gross square feet), 850 acres including 128 acres of turf, 62 acres of parking and 195 miles of sidewalk.

- 1997      The number of living alumni has reached 127,676.
- The new Science Laboratory Building was dedicated on September 9. Internationally recognized speakers were part of a year-long event, "The Future of Science: A Campus Celebration."
- 1998      The number of living alumni reached 130,481.
- Campus celebrates a year-long event, "Living Ethics: A Campus Reflection on Values and Community."
- 1999      Work was begun on the transition of Mennonite College of Nursing to become part of the University.
- Victor John Boschini, Jr. became the 16th president of the University.
- Mennonite College of Nursing officially joins Illinois State University as the school's sixth college.
- 2000      \$115 million worth of construction projects take place on campus including the Performing Arts Center and the Milner Library Plaza.
- Ground was broken for the In Exchange Project—the School Street Renovation.
- Illinois State entered the "quiet phase" of the capital campaign.
- 2001      "Educating Illinois" was announced to the campus community as a campus wide enhancement plan.
- The first online elections for student government occurred.
- Renovations for Milner Library reached the half-way point.
- Classes were canceled for one hour on September 14 in a Student Government organized campus rally in response to the nation's attacks on September 11. Over 10,000 people attended the rally on the Quad.
- 2002      Construction on the Center for Performing Arts and the Milner Library renovation was completed. Work was begun on the new College of Business building.
- The University kicked off the public phase of its first capital fundraising campaign—Redefining Normal.
- The University faced budget cuts from the state and was forced to reduce the number of summer classes offered to students and raise tuition by 16 percent.

- 2003 Renovation of Wilkins Hall began.
- 2004 Al Bowman is named as the University's 17<sup>th</sup> president.  
The In Exchange project is completed and dedicated.  
Phase one of the Schroeder Hall renovation is completed; phase two begins.
- 2005 The University's first Comprehensive Campaign exceeds the \$88 million goal by raising \$96 million.  
The new College of Business building opens for classes.  
The total number of living alumni reaches 160,000.
- 2006 The Illinois State University Foundation received a \$5.9 million grant to create the Genevieve Green Gardens at Ewing Cultural Center.  
The "Spread the Red" marketing campaign began through Athletics Department leadership.  
The year's freshman class was the most academically talented in Illinois State's history, with an average ACT score of 23.9 and a GPA of 3.4.
- 2007 The University celebrates its sesquicentennial with a variety of special programs, events, and an anniversary alumni directory.  
The College of Business was selected as one of the nation's best choices for earning an MBA by Princeton Review's report—Best 282 Business Schools.  
The basketball court in Redbird Arena was named in honor of Doug Collins, the baseball field is named in honor of Duffy Bass, and the golf course is named in honor of D.A. Weibring.  
The *Illinois State* alumni magazine online availability begins.  
Trustees approve construction of the Student Fitness and Kinesiology Recreation center and baseball stadium expansion.
- 2008 Genevieve Green Gardens at Ewing Cultural Center is dedicated.  
The Board of Trustees approved the demolition of central campus residence halls—Dunn, Barton and Walker. Groundbreaking for the Student Fitness and Kinesiology Recreation center occurred during Homecoming.

- The Alumni Center is dedicated and sees over 20,000 visitors in its first year.
- 2009 Illinois State is ranked as one of the 100 best values in public colleges in the country according to Kiplinger's Personal Finance magazine for the fifth straight year.
- Registrar debuts online transcript application.
- TV-10 celebrates 35<sup>th</sup> reunion.
- Stevenson-Turner's \$25.8 million infrastructure enhancement begins in the summer.
- The total living alumni reaches 180,000.
- Gamma Phi Circus celebrates 80 years and is the oldest collegiate circus in the nation.
- 2010 Illinois State becomes the first public university in Illinois with a Service-Learning minor.
- Illinois State University has retained its third-tier ranking with a graduation rate of 70% according to the *U.S. News and World Report*.
- Opening of the new state-of-the-art Student Fitness Center and renovated historic McCormick Hall.
- The Board of Trustees approved the renaming of the College of Business building to the State Farm Hall of Business. This is in recognition of State Farm Foundation's commitment to Illinois State University.
- The Board of Trustees approved a \$5.5 million project to remodel Hovey Hall. The will include a renovation of the exterior front entrance and the relocation of the Financial Aid Office to Hovey.
- Illinois State was named a "Tree Campus USA" for the third straight year in honor of its dedication to campus forestry management and environmental stewardship.
- 2011 Cardinal Court, which was built in the 1950's, was approved by the Board of Trustees for decommission and demolition. Construction of a new facility is scheduled to be completed by August 2012 and will cost \$59 million.
- Athletic Department has made it possible to purchase via the GoRedbirds.com website a single game online ticket with a barcode which can be printed at home.
- Red and White Fund was established to help students in areas of greatest need, as defined by the Director of Financial Aid.

- 2012 Illinois State is the first public higher education institution in the State of Illinois to offer Civic Engagement & Responsibility as a minor.
- In the State of the University address, President Bowman announced a \$25 million renovation for Hancock Stadium to be completed by the fall of 2013.
- The Board of Trustees approved an Enrollment Competitiveness Program for fall 2012 which will remove the out-of-state tuition differential for selected, high-achieving and talented out-of-state students.
- The Veterans Study Center was dedicated on September 14, 2012. The Center offers an environment of support and assistance to student-veterans.
- After fifty years, south campus which included Hamilton, Atkin, Colby and Whitten residence halls and Feeney Dining Center was decommissioned in August 2012.
- Cardinal Court, Illinois State's new campus housing designed as apartment-style living, opens in the same location the housed the old Cardinal Court from 1957 to 2010.
- Julia Visor Academic Center was opened to provide services and programs to assist students in their pursuit of academic excellence at Illinois State University.
- Illinois State University won the first Political Engagement Project Program of Excellence Award sponsored by the New York Times and the National American Democracy Project.
- 2013 Illinois State University's College of Business received a 9<sup>th</sup> ranking for the "best administered MBA program" by *The Best 296 Business Schools: 2013 Edition* published by the Princeton Review.
- Illinois State's enrollment for fall 2012 rose to 21,080, with an average GPA of 3.43 and average ACT of near 24 for incoming freshmen.
- Dr. Al Bowman, 17<sup>th</sup> President, announces his retirement effective May 15.
- Dr. Timothy J. Flanagan is selected as Illinois State University's 18<sup>th</sup> President beginning on August 15.
- 2014 Illinois State climbed in *U. S. News and World Report's* 2013 rankings of the top public universities in the nation, to #81, based on academic quality and excellence.
- Illinois State students are successful completing their degrees on time, placing the University's high graduation rate (71.5%) among the top 10% of all U. S. universities.



Dr. Larry Dietz is named Illinois State University's 19<sup>th</sup> President, following the resignation of Dr. Timothy Flanagan.

Illinois Stated enrolled record-breaking first time in college class

Reggie Ride bike-share program launched.

*Washington Monthly's* ranked Illinois State in the top 50 universities (47<sup>th</sup>) for Best Bang for the Buck.

The Emergency Operation Center opens as location for all partners to convene during large incidents and crises.

All residence halls are converted to electronic door access systems.

University Galleries is relocated to Uptown Station in Uptown Normal.

2015 Illinois State climbed in *U. S. News and World Report's* 2015 rankings of the top public universities in the nation, to #79, based on academic quality and excellence.

Illinois State ranked 4<sup>th</sup> among Best Bang for the Buck Colleges in the Midwest in *Washington Monthly's* 2015 rankings. Illinois State only Illinois university ranked in top 5.

Illinois State holds largest LGBTQ college conference in nation with record-breaking numbers. The 22<sup>nd</sup> annual Midwest Bisexual Lesbian Gay Transgender Ally College Conference was orchestrated entirely by ISU students advised by campus staff.

The University secured over \$36.8 million in total fundraising productivity, the best fundraising year in ISU history.

For second year, Illinois State enrolled record-breaking first time in college class of over 3,600 students.

Illinois State received full reaccreditation from the Higher Learning Commission of the North Central Association of Colleges in Schools. This will be in place until 2023-2025.

The University continues strong graduation rate at 73.4 percent, the highest in recent history. It ranks in the top ten percent of all U.S. universities.

A new Foods Lab opened in Turner Hall for the College of Applied Sciences and Technology

University Marketing and Communication launched *Redbird Scholar*, a new magazine focused on research, scholarship, and creative expression.

2016 *The Chronicle of Higher Education* named Illinois State a Great College to Work For.

The Illinois State traditions website launched and the traditions book was released.

The University secured over \$21 million in total fundraising productivity, the second-best fundraising year in ISU history.

Total living alumni reaches over 205,000.

For third consecutive year, record-breaking enrollment numbers are obtained.

Illinois State climbed in *U. S. News and World Report's* 2017 rankings of the top public universities in the nation, to #78, based on academic quality and excellence.

For second consecutive year, *The Chronicle of Higher Education* named Illinois State a Great College to Work For.

2017 College of Business ranked 75<sup>th</sup> among *Bloomberg Businessweek's* Best Undergraduate Business Schools.

The demolition of south campus which included Hamilton, Atkin, Colby and Whitten residence halls and Feeney Dining Center took place during the summer/fall of 2016.

Redbird Plaza dedicated behind Fell Hall

Groundbreaking for the revitalization of the Bone Student Center, a three phase project to conclude in 2020.

Illinois State launches cybersecurity major in fall of 2017, the first university in Illinois to have such a major

Launch of the public phase of Redbirds Rising: The Campaign for Illinois State. The campaign began in 2013 and will conclude in 2020 with a goal of \$150 million.

2018 Illinois State climbed in *U. S. News and World Report's* 2018 rankings of the top public universities in the nation, to #83, based on academic quality and excellence

For third consecutive year, *The Chronicle of Higher Education* named Illinois State a Great College to Work For, the only four-year, public university in Illinois on the list

New *Redbird Impact* magazine launches with mission to highlight the core value of civic engagement.

Illinois State and INTO University Partnerships sign agreement to enhance campus diversity and increase international enrollment.

Illinois State saw a large spring graduating class with more than 4,300 earning baccalaureate and graduate degrees.

Total living alumni reach over 215,000

University posted second-highest fundraising year, raising more than \$21.9 million in private support.

2019 University saw 10 percent increase in freshman class with enrollment at 3,689, making it the second-largest class in the past 25 years. Graduate student numbers grew for the third year as well.

Illinois State remains in *U. S. News and World Report's* 2019 rankings of the top public universities in the nation at #91, based on academic quality and excellence

Watterson Towers celebrates 50 years on campus.

Inaugural Birds Give Back Day, ISU's exclusive day of giving, breaks single day giving records with a total of \$609,935.

First phase of the Bone Student Center Revitalization completed. This included new food venues, new location of the bookstore and information desk, and new Office of Admission space.

Illinois State University has joined the Illinois Innovation Network (IIN), a group of hubs across the state that aims to boost Illinois' economy through entrepreneurship, research, and workforce development.

University posted highest fundraising year, raising more than \$37.3 million in private support. Also marks fifth consecutive fiscal year of raising more than \$21 million.

Illinois State Athletics crowned the 2019 Missouri Valley Conference All-Sports Champion after six teams won titles during the 2018-19 season.

Illinois State welcomes largest freshman class in 33 years with 3,860 enrolled. The total number of graduate students also grew for fourth year in a row.

2020

Artist and alumna Wonsook Kim '75, M.A. '76, M.F.A. '78, honorary doctorate of arts '19, and her husband, Thomas Clement, have made a \$12 million gift to Illinois State in support of the College of Fine Arts and the School of Art. In recognition of the couple's remarkable generosity, Illinois State University President Larry H. Dietz announced the College of Fine Arts and the School of Art will forever be known as the Wonsook Kim College of Fine Arts and the Wonsook Kim School of Art.

Plans announced for the new Multicultural Center to be located on Main Street and expected to open by fall of 2020.

Gamma Phi Circus, the nation's oldest collegiate circus, celebrated 90 years.

Redbird Rising: The Campaign for Illinois State University surpasses \$150 million goal.

State funding released for renovation of the Wonsook Kim College of Fine Arts facilities

Aondover Tarhule named vice president and provost

Illinois State University takes on a new normal with the Coronavirus (COVID-19) pandemic including moving classes online, planning for future events, university travel, and the fall semester, and continuing to operate to offer student and alumni services.

Commencement moved to virtual ceremonies due to the Coronavirus pandemic

2021

Total living alumni reaches 220,000

Redbirds Rising: The Campaign for Illinois State ends with a total of \$180.9 million raised by 56,143 donors.

Illinois State renames Watterson Towers' ten houses. The renaming effort comes in the wake of the tragic death of George Floyd, and the subsequent removal of the names of those who supported or continued the system of slavery.

University welcomes 3,353 freshmen for the 2020-21 academic year with total enrollment remaining strong at over 20,000 despite the uncertain times

President Larry Dietz announces retirement effective June 30, 2021

ISU receives national Voter Friendly Campus designation

The Vidette moves to complete online version

Illinois State becomes part of the SHIELD Illinois network offering PCR tests for COVID-19.

Rededication of the Bone Student Center takes place following the three year revitalization plan's completion

ISU introduces Redbird Stage Crossing to replace traditional commencement ceremonies for graduates of 2020 and spring 2021

Dr. Terri Goss Kinzy named the 20<sup>th</sup> president of Illinois State University

2022 For the first time in more than three decades, Illinois State has earned back-to-back Missouri Valley Conference All-Sports Championships.

Plans announced to return to a more traditional college experience starting in the fall semester

Illinois State University welcomed 3,374 freshmen and 1,778 transfers to its student body for the 2021-2022 academic year. Total enrollment stands at 20,233.

ISU Multicultural Center officially opens. The space is dedicated to providing support for students and strengthening the University's commitment to equity, diversity, and inclusion.

Illinois State University celebrates its 100<sup>th</sup> Homecoming

The University unveiled the new EDI ISU word mark as a way to show unity throughout campus for equity, diversity, and inclusion (EDI) efforts.

The Alumni Association awards the first Andrew Purnell Jr. Trailblazer Award as a part of the Alumni Awards program. The award is named after the 1957 graduate who spent his life advocating for equity particular for Black students.

ISU's women's basketball clinched the MVC Tournament championship for the first time since 2008 and fifth time overall. The team earned an automatic bid to the NCAA Tournament.

The University launches the \$4.4 million Faculty Diversity Enhancement Program to support the recruitment, retention, and success of faculty members who promote equity, diversity, and inclusion.

Illinois State University selected to be a part of Amazon Prime’s reality show, *The College Tour*, with filming to take place in the spring and the episodes to air in the fall.

Redbird Athletics broke ground for the new Indoor Practice Facility to be completed in spring 2023. The Indoor Practice Facility will be a heated, opaque dual-membrane fabric air dome with insulation pockets for planned year-round use.

IBHE and ISU Board of Trustees approve the College of Engineering which will include two academic units, Department of Electrical Engineering and Department of Mechanical Engineering

ISU Board of Trustees approve the pre-construction phase for the South Campus Housing-Dining Project, originally set to begin in 2020 but put on hold due to the COVID-19 pandemic.

College of Education and University High School receive \$5 million gift, one o the largest planned gifts in university history.

The University and Redbird Athletics celebrated the 50<sup>th</sup> anniversary of Title IX throughout the year along with a special three-day celebration in June.

University release first-ever Sustainability Strategic Plan. The plan outlines goals for the University, including creating more sustainability-related courses and research opportunities; prioritizing conservation and innovation for water, energy, and construction efforts; providing sustainable transportation incentives; and nurturing more leadership roles for students through campus and community partnerships.

Illinois State University welcomed 3,983 freshmen, the largest class in 35 years, to its student body for the 2022-2023 academic year.

2023 Mennonite College of Nursing and Memorial Health partner to open new MCN location in Springfield.

Redbird Esports opens new 11,000 square feet facility in Bowling and Billiards Center.

ISU ranked 53<sup>rd</sup> in the “Best Value Schools” category in *U.S. News & World Report* 2022-2023 Best Colleges rankings.

The 800-foot-log cattle barn at University Farms caught fire. While the fire took 15-hours to put out, there were no animal injuries or loss of life thanks to the work of local firefighters and the ISU University Farm team.

Birds Give Back, ISU's one day of giving, broke giving records with over one million dollars raised from 4,439 gifts.

Dr. Aondover Tarhule named interim president of Illinois State University until June 30, 2024.

Inaugural philanthropy awards presented at Gratitude Gala

Illinois State University celebrates 100 years of Redbirds with the official mascot name coming to being in 1923.

Redbird Esports champion Overwatch team claimed spot in the Pro-Am West tournament, the only collegiate Overwatch team to do so.

Redbird Arena renamed CEFCU Arena after ISU and CEFCU entered a naming rights agreement valued at \$3.1 million over 10 years.

Emmy-and Golden Globe-award winning actress Jane Lynch '82 holds guest artist residency on campus to direct stage reading of *Lost in Yonkers*

Ground broken for the Mennonite College of Nursing Simulation Center.

## ISU Glossary

Academic Senate—The major internal governance body of the University, the Academic Senate acts in legislative and advisory roles with regard to University policies involving faculty and students, academic programs and planning, and University concerns. Based upon the concept of shared governance, the 50-member Senate’s representatives consist of 27 faculty members, 19 students, three vice presidents, and the president of the University.

Active Alumni Association Member—An alumnus who has made a gift to the Illinois State University Foundation during the current or preceding year. An active alumnus has the right to vote at the Association Annual Meeting and is eligible to serve on the Board of Directors.

Alumni Achievement Award—An award honoring alumni achievements in their fields or avocations who have received favorable statewide, national, and international recognition; who have received honors from associations or employers; or whose work has proven beneficial to a pronounced segment of society.

Alumni Association—A volunteer organization dedicated to serving alumni, students, and the University. A primary mission is to strengthen the University’s traditions, its future growth, and its networks of influence. All alumni automatically become members after graduation.

Alumni Association Board of Directors—The governing board of the Alumni Association which serves the University as ambassadors, advocates, and advisors. It is comprised of no more than twenty-seven voting members representing a diverse blend of professions, ages, ethnic heritage, and geographic locations. The Board works with the Alumni Engagement staff to strengthen alumni relations and fulfill the University’s mission.

Alumni Engagement—The administrative staff of Alumni Engagement work in cooperation with volunteer leaders of the Illinois State University Alumni Association to bring alumni together for goodwill and fellowship, involve alumni with Illinois State, and cultivate support for the University.

Alumni Records—Data on all alumni that are maintained by University staff in the Advancement and Administrative Services office, which ensures the integrity and confidentiality of these files.

Alumnus—Any person who has graduated from Illinois State University. The term has four variations:

1. Alumna: singular, feminine designation; 2) Alumnae: plural, feminine designation; 3) Alumnus: singular, masculine, or feminine designation; and 4) Alumni: plural, masculine, or feminine designation.

Andrew Purnell Jr. Alumni Trailblazer Award—An award recognizing the Illinois State University alumni trailblazers, groundbreakers, innovators, and pioneers who have devoted their time and effort in servant leadership to courageously make a positive change.



Annual Fund—Coordinated through the Development office, this is the primary vehicle through which alumni provide support for Illinois State University.

Board of Trustees—The governing board of Illinois State University.

Board of Trustees Alumni Association Liaison—A member of the Board of Trustees who is appointed by the Board of Trustees chair to provide a communication vehicle between the Alumni Association and the board.

BSC (Bone Student Center) —The BSC is a multi-purpose facility which also houses Braden Auditorium, a 3,457 seat auditorium which has three levels of seating and features an annual entertainment series of famed celebrities and theater box office hits; numerous meeting rooms; and various restaurants.

CASE (Council for Advancement and Support of Education) —An international organization of alumni, development, public relations, and communications professionals.

Development Staff—The University employees responsible for raising private support from alumni, corporations, and foundations.

Distinguished Alumni Award—The highest honor given by the Illinois State University Alumni Association recognizes exceptional achievements. Nominees must have shown outstanding performance in the professions; must be recognized as leaders; must have made outstanding contributions to the community, state, or nation; and must have previously received an Alumni Achievement, E. Burton Mercier Alumni Service, or Outstanding Young Alumni Award or be a past inductee into an Illinois State college Hall of Fame.

E. Burton Mercier Alumni Service Award—An award sponsored by the Illinois State University Alumni Association which honors alumni of the University for outstanding service to Illinois State University Alumni Association or to some other segment of the University or for their service to mankind through volunteer efforts to a community, state, national, or social cause.

Emeritus Director—Members who have served the Alumni Association Board of Directors with distinction and excellence may be appointed Emeritus Director by the Alumni Association Board of Directors. An Emeritus Director may continue to serve as long as they retain an active interest in the work of the Association, but may end their terms at any time. They will receive information and may attend meetings and special events of the Board of Directors. They are not entitled to vote or are eligible to serve as officers or chairs of standing committees, and their presence shall not be included in determining a quorum.

Ewing Manor—A residential estate formerly owned by Hazel Buck Ewing that is owned and operated by the Illinois State University Foundation. Located at the corner of Emerson Street and Towanda Avenue in Bloomington, the manor and grounds provide a quiet retreat atmosphere for the University and the broader community to hold meetings and events, such as, conferences, receptions, or private weddings. The grounds are also home for the Illinois Shakespeare Festival in the theatre at Ewing.

Fell Arboretum—A curated collection of trees, shrubs, and plants integrated with art and architecture on the Illinois State campus. Its genesis can be traced to Jesse W. Fell, one of the University’s founders, who proposed that “every kind of tree that will flourish in Central Illinois should be planted on the grounds. . .” Fell had planted over 14,000 trees on the campus by 1868. The Fell Arboretum Society is actively working to continue Fell’s dream by raising funds for a living laboratory on the campus that will be both an educational resource and aesthetic experience.

Foundation (Illinois State University Foundation) —A nonprofit corporation organized under Illinois law, which has the major responsibility for raising private funds for the University; receiving, holding, and administering all private gifts to the University; and managing the assets of the University. Not directly an arm of the state, the Foundation is designated by the Illinois Legislative Audit Commission a “university-related” organization. Its Board of Directors is comprised of at least 20 and no more than 25 elected members who are not employees of the University. The vice president of University Advancement is the executive director of the Foundation.

Future Alumni Leader/Future Alumni Leader of the Year—An awards program coordinated by Student Alumni Council and Alumni Engagement staff designed to recognize students for their volunteer service to the University. Each academic unit is asked to select one student to receive a Future Alumni Leader award. From these students, one is selected as the Future Alumni Leader of the Year. This award is given during the Alumni Award dinner.

Gamma Phi Circus—The oldest and largest collegiate circus in the nation was founded in 1929 by Athletic Director Clifford “Pop” Horton.

Half Century Club—The club is sponsored by the Alumni Association to recognized members of the 50 year and over anniversary class. The Half Century Club Committee works with Alumni Engagement staff to plan an annual spring reunion.

Honorary Alumni Association Membership—Individuals who have received honorary degrees from the University shall automatically become honorary members of the Alumni Association. The Board of Directors may also confer honorary membership to individuals they deem worthy of recognition. Honorary members have the right to vote at the Association Annual Meeting.

Honorary Director—Persons who have provided special service or significant personal contributions to the Association may be appointed honorary directors by the Board of Directors. Honorary directors are appointed for their lifetimes. They will receive information and may attend meetings and special events of the Board of Directors. They are not entitled to vote or are eligible to serve as officers or chairs of standing committees, and their presence shall not be included in determining a quorum.

Illinois Board of Higher Education—The governing board for Illinois higher education, which includes private and public institutions, community colleges, and the Illinois Student Assistance Commission.

Inactive Alumni Association Member—An alumnus who has not made a gift to the Illinois State University Foundation during the current or preceding fiscal year. An inactive alumnus may participate in any programs and/or services offered to alumni but does not have the right to vote at the Association Annual Meeting and may not serve on the Board of Directors.

Illinois State —The university magazine, delivered three times a year, which highlights campus news, University faculty and programs, individual alumni and group achievements and news, athletic information, Alumni Association programs and services, and much more. Alumni can opt in to receive a printed copy.

ISNU (Illinois State Normal University) —Illinois State Normal University became the first state university in Illinois after Governor William Bissell signed a bill on February 18, 1857, to create a Normal school to prepare teachers. Founder Jesse Fell had led the campaign to locate the University in Bloomington, Illinois; Abraham Lincoln drafted the legal documents to establish this university.

ISU (Illinois State University) —Illinois State University became the official name of the institution on January 1, 1964, when the University's mission was broadened from a Normal teacher education institution to a multipurpose institution.

Key Chain Program—A program sponsored by the Alumni Association which distributes key chains to graduates in December and May.

Legacy— A student or alumnus/a who has a parent, guardian, grandparent, or sibling who is an Illinois State graduate.

Legacy Tuition Waiver—These waivers are awarded annually by the Alumni Association to assist the University in recruiting quality prospective students, to provide an additional benefit available to graduates, and to foster continuing relationships between alumni and their alma mater. A limited number of awards are available.

Outstanding Young Alumni Award —An award sponsored by the Illinois State Alumni Association honoring alumni who are 40 years or younger on January 1 of the year the award is presented. Recipients are recognized for contributions to society, their profession, or the University. Selection is based upon significant accomplishment or promise in one's field, leadership qualities, or evidence of civic, cultural, or charitable involvement.

Presidents Roundtable—This committee provides an opportunity for past presidents of the Alumni Association to remain connected with the Association and University.

CEFCU Arena—A 10,500 seat athletic facility, concert hall, and convention center, which has a unique cloth covered roof. It is home to the men's and women's basketball teams and the women's volleyball team.

Reggie Redbird—The mascot for Illinois State University athletics.

SAC (Student Alumni Council)—An organization open to all students at Illinois State University aimed at cultivating a lifelong relationship with their Alma Mater. It sponsors scholarships, plans and implements programs, and offers leadership experience. The student members work with the Alumni Engagement staff and the Alumni Association Board of Directors and are housed in the Alumni Engagement office.

SAC/Marion H. Dean Legacy Scholarship— \$1,000 scholarships available to the son or daughter of an Illinois State graduate. The nonrenewable scholarships are made possible by a donation from the family of Marion H. Dean '27 and the continuous contributions from Student Alumni Council and the Alumni Association Board of Directors.

SAC Sibling Weekend—An event during which SAC sponsors a carnival for students and their siblings, traditionally held the same weekend as Gamma Phi Circus.

Illinois Shakespeare Festival—An acclaimed outdoor, Elizabethan-style theater series sponsored by the College of Fine Arts at the Theatre at Ewing. Students, faculty, actors, actresses, and directors from Illinois State and across the nation perform and direct plays in a revolving repertory each summer.

Sister Cities Japanese Garden—The garden is located on the grounds of Illinois State University Foundation's Ewing Manor. Designed by gardeners from Asahiigawa, Japan, Bloomington/Normal's Sister City, it serves as a living symbol of the friendship of these two peoples.

Student Government Association—The student governing board of the Illinois State University student body. The student officers and legislators are elected by the total student body during the spring semester for one year terms.

University Advancement—A division within Illinois State University comprising the following areas: Advancement Operations, Alumni Engagement, Annual Giving, Development, Illinois State University Foundation, University Marketing and Communications and vice president for University Advancement. Leadership is provided by a division vice president who also serves as the executive director of the Illinois State University Foundation.